

COVID-19 Ab

This is not a complete Instruction for use. For more detailed instructions, please refer to IFU.

Test Components



Test Cartridge



Detector tube (Granule)



Detector diluent vial



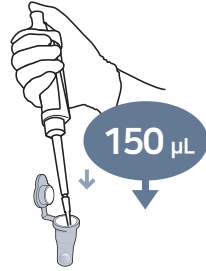
ID Chip

Test Procedure

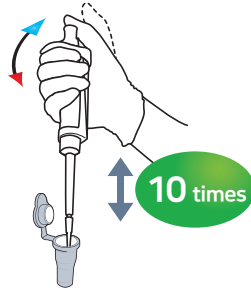
1 Draw 150 μ L
(Detector diluent)



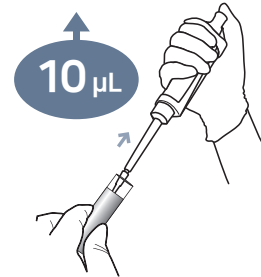
2 Add it into
Detector tube



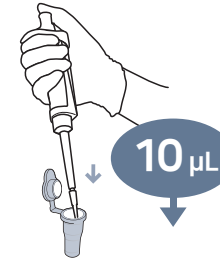
3 Pipetting the
mixture 10 times.



4 Draw 10 μ L
(Whole blood / Serum / Plasma)



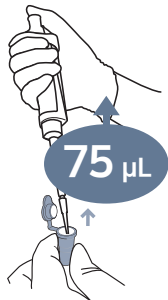
5 Add it into
Detector tube



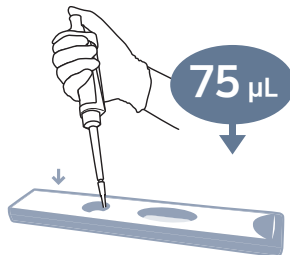
6 Shake 10 times



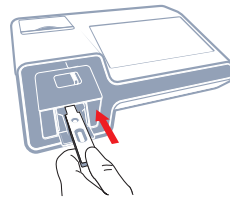
7 Draw 75 μ L



8 Load the sample mixture



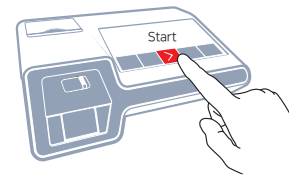
9 Insert the test cartridge



10 Wait 10 minutes



11 Press 'Start'



12 Read the test result

